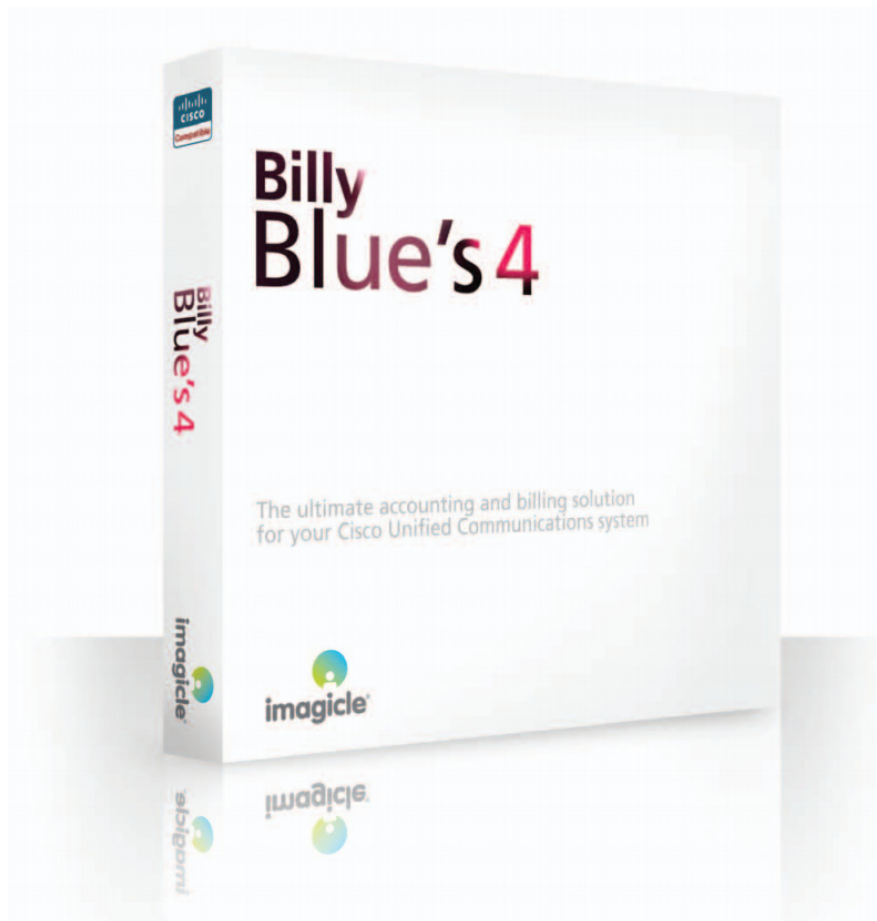


Backup database of Billy Blue's 4

Delete old calls from the online database

Attach the backup db to consult the historical data

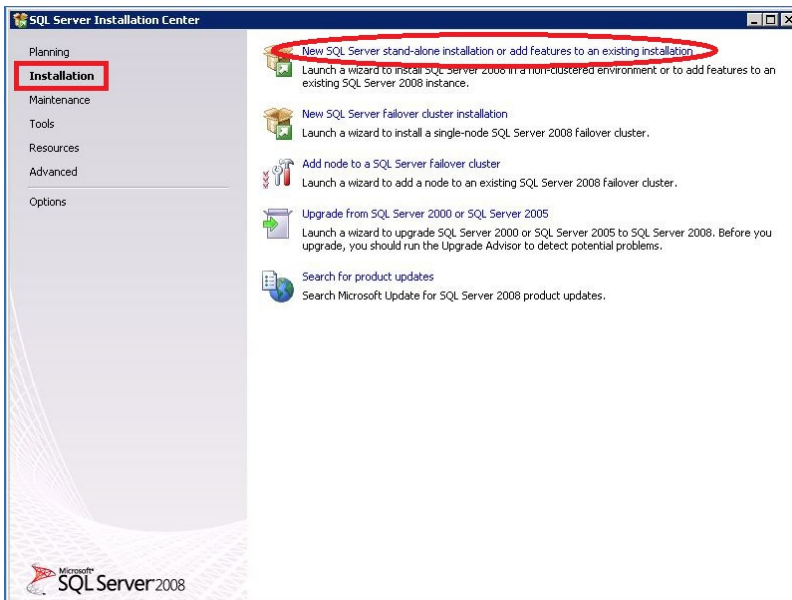


Requirement: If not already in use, download and install Microsoft ® SQL Server 2008 Management Studio Express

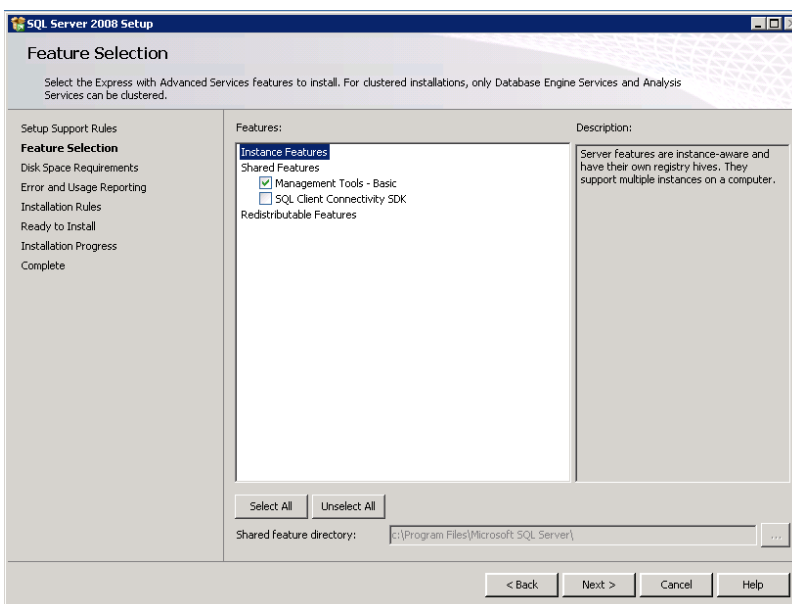
1. Download from Microsoft the version of the SQL Server 2008 Management Studio Express compatible with your operating system:

<http://www.microsoft.com/it-it/download/details.aspx?id=7593>

2. Start the setup
3. Click on Installation and on New SQL Server...



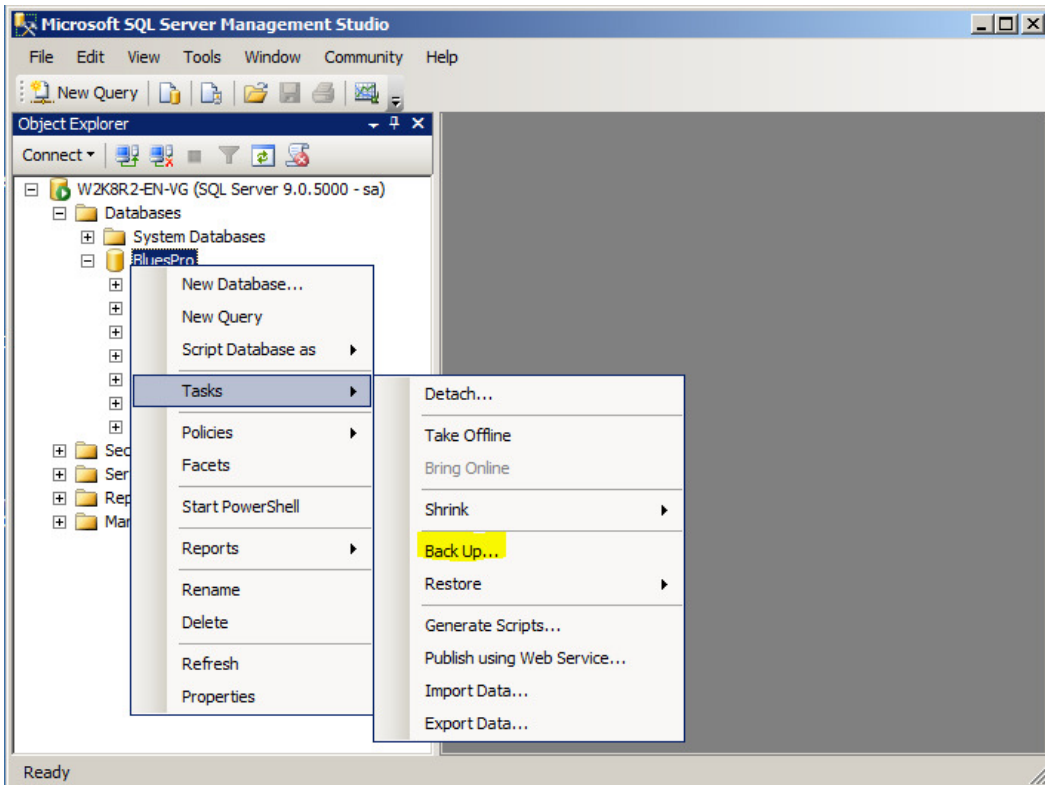
4. Confirm and get on to the section 'Feature Selection'
5. Enable the flag on Management Tools - Basic



6. Click Next and finish the installation procedure

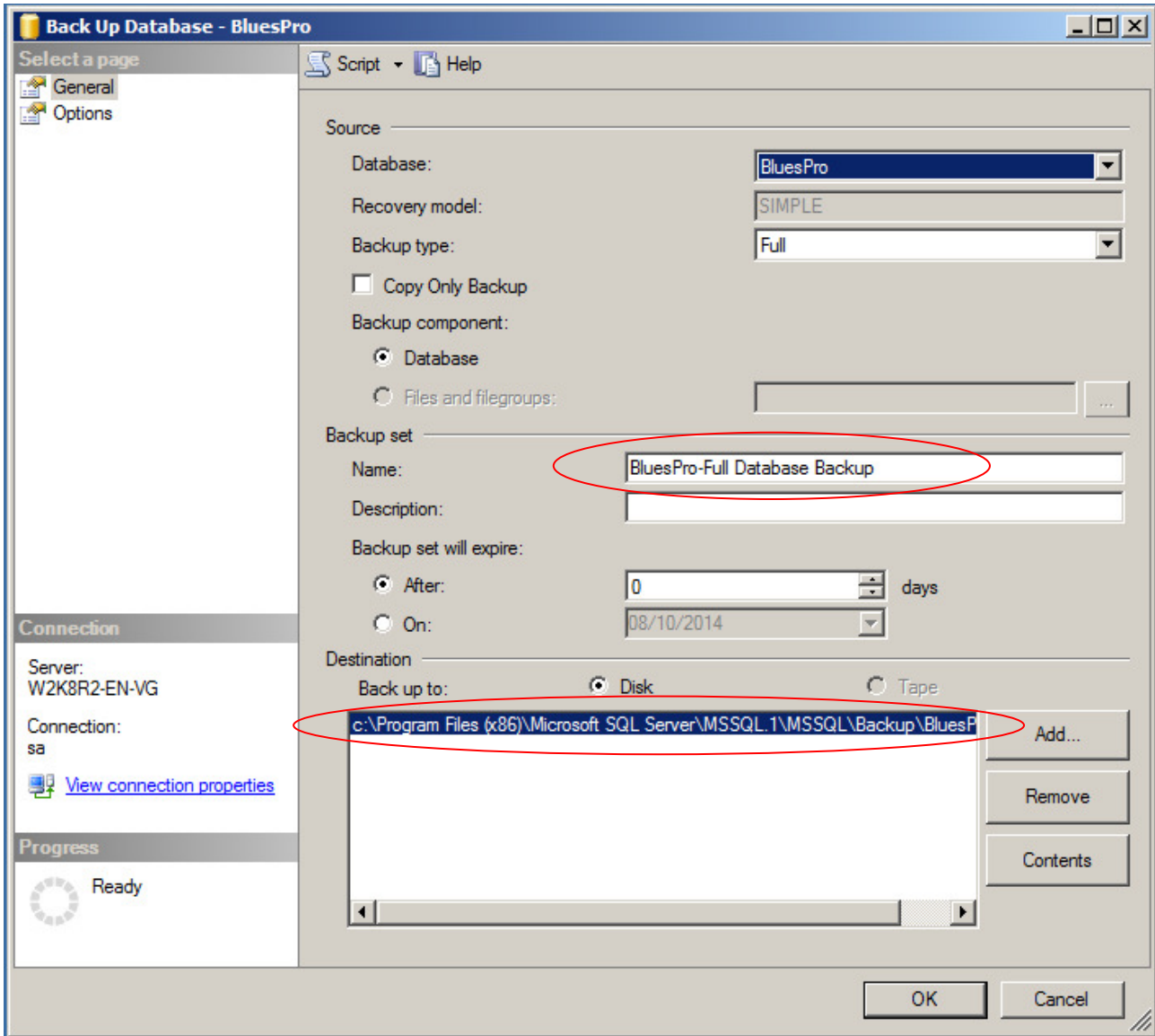
Backup the database of Billy Blue's 4 and reattach it to consult the historical data

1. Close the Web page of Imagicle Application Suite
2. Open SQL Manager Studio and connect to SQL server
3. Right-click on the database "BluesPo" -> Tasks -> Back Up ...



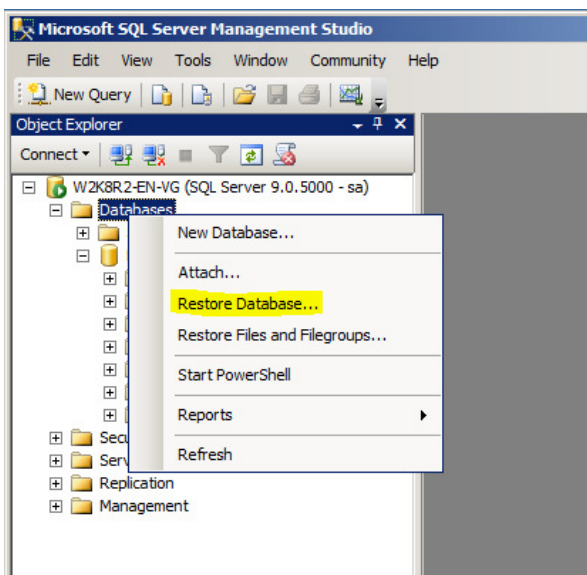
4. Customize the name of the new backup database (eg. Indicating the date)

5. Specify the destination folder for the Backup Files

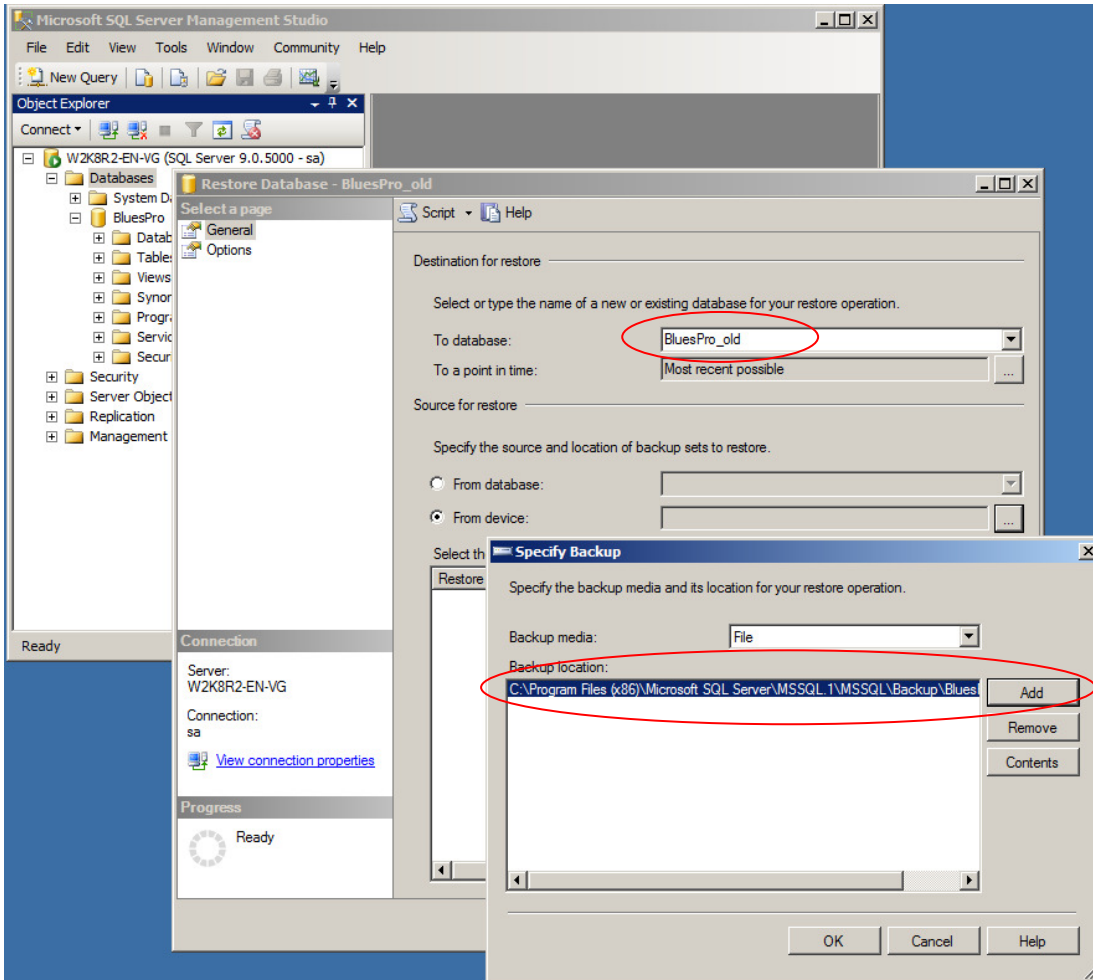


6. Re-import the DB which has just been did the Backup

7. Right-click on the Database -> Restore Database ...

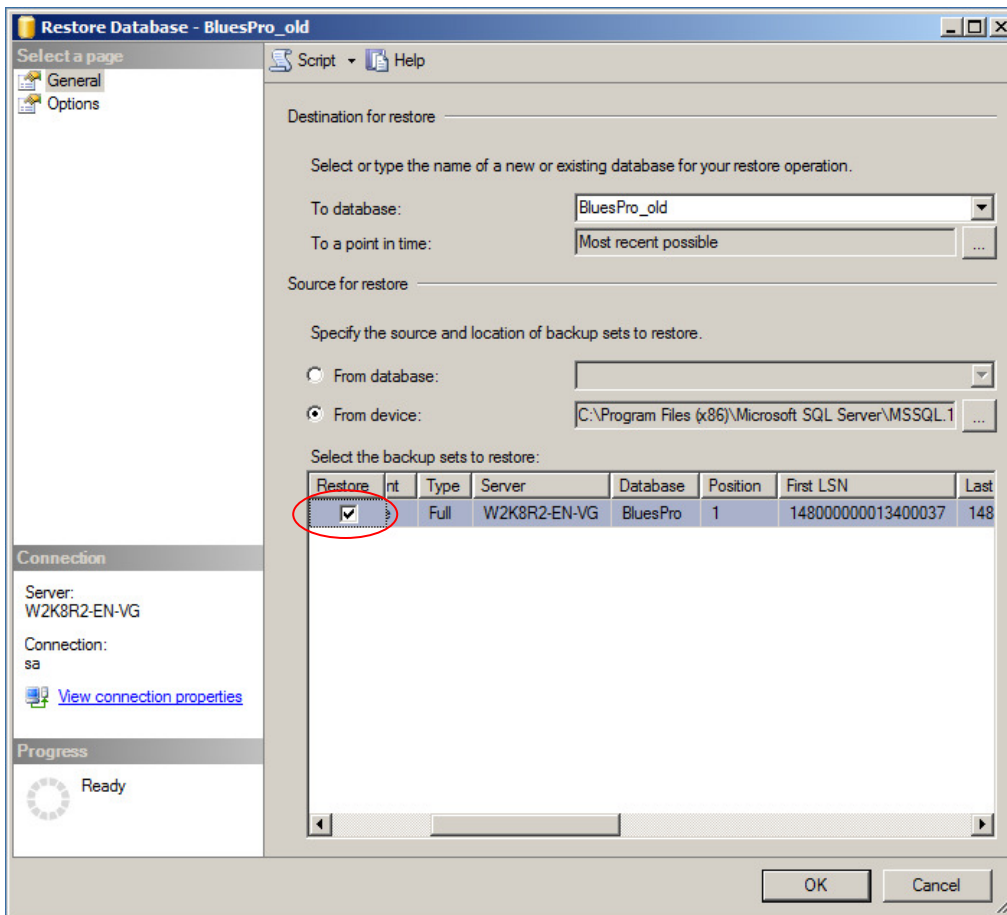


8. Enter the name of the new DB and reimport from the Backup
9. Target Database: BluesPro_Old
10. Select 'From device' and click on the square [...]
11. Click [Add] and select the backup file previously saved

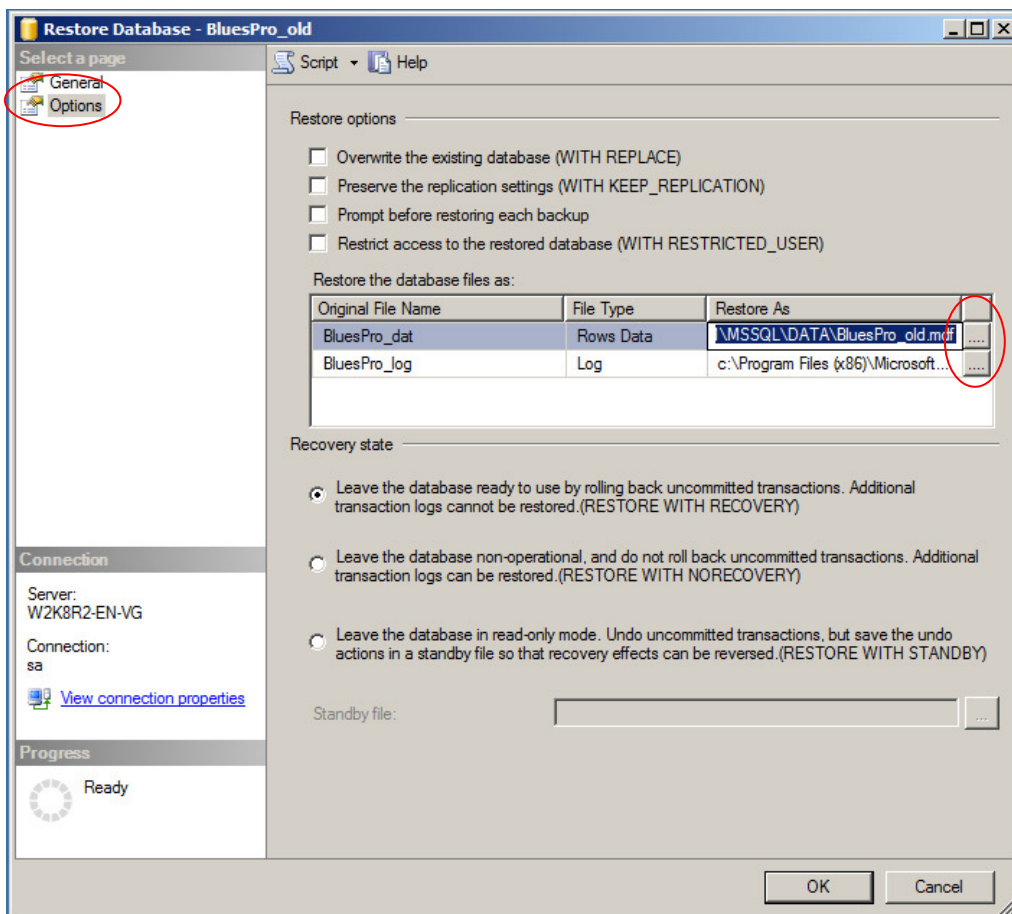


12. Click on OK

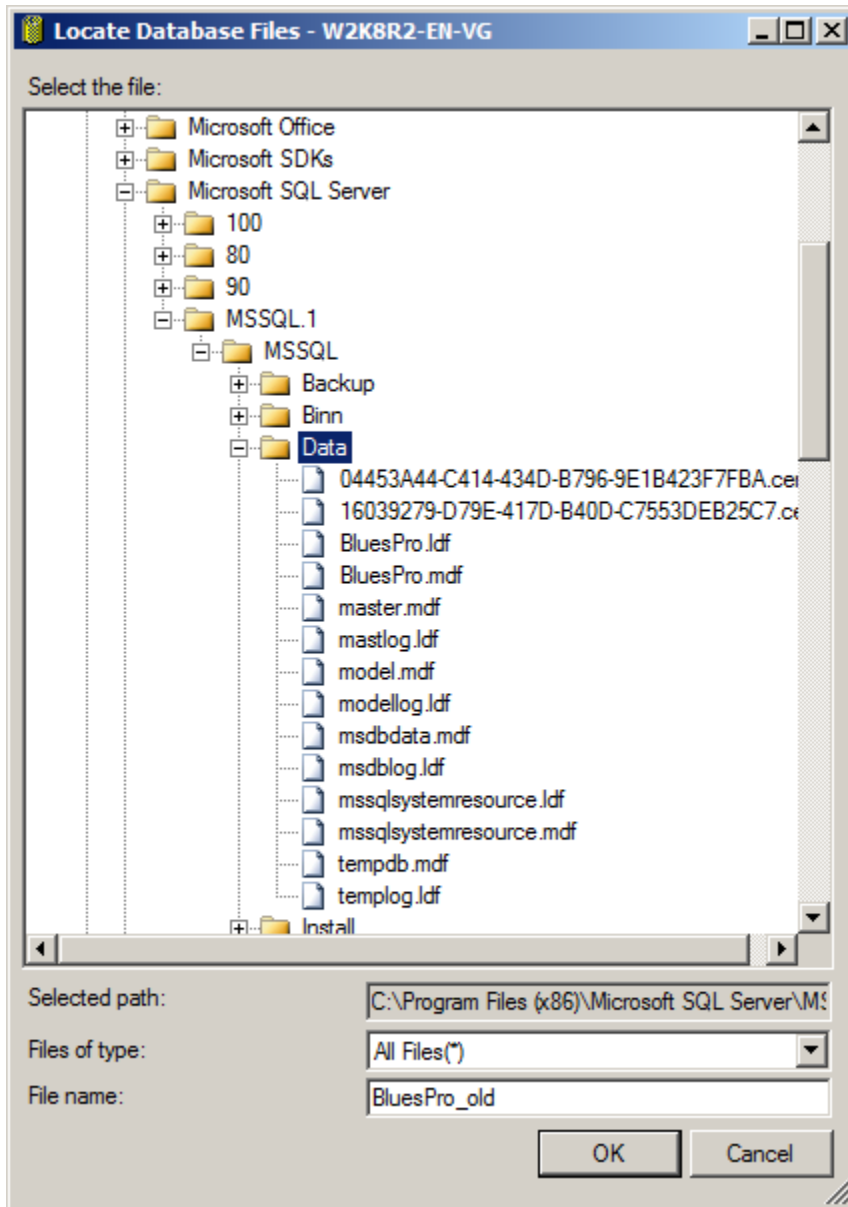
13. Select the Flag 'Restore'



14. Click on 'Options'



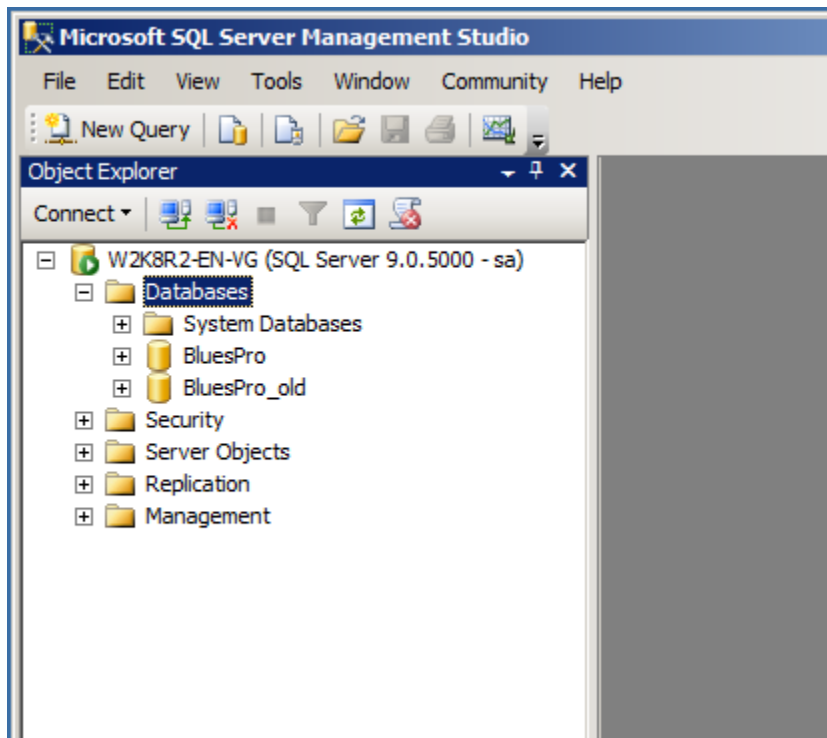
15. Verify the path of the new database to be restored and click on the appropriate squares to indicate the correct path.



Enter the path to the folder where to save the Database BluesPro_Old for both .mdf and .ldf files

16. Click on OK

17. You can see the new database BluesPro_Old



Change the string to access to the Billy Blue's 4 Backup database to see the historicals calls.

1. Open the file C:\Program Files (x86)\StonevoiceAS\Apps\BillyBlues\Engine\Web\@ConnectionStrings.config with Notepad.
2. On the string:

```
<add name="LocalSqlServer"
connectionString="server=(local)\IMAGICLE;database=BluesPro;uid=sa;password=SvBillyBlues$;Current Language=English;" providerName="System.Data.SqlClient" />
```

Change the name of the database with the Backup to open it with Billy Blue's 4

Ex. **database=BluesPro_Old**

Result of the string:

```
<add name="LocalSqlServer"
connectionString="server=(local)\IMAGICLE;database=BluesPro_Old;uid=sa;password=SvBillyBlues$;Current Language=English;" providerName="System.Data.SqlClient" />
```

3. Open the web interface of the Imagicle Application Suite.
The database will be used is BluesPro_Old; therefore it is suggested to use it only for call display and print reports of the old calls.
Do not proceed with:
 - changes configuration and setting services,
 - adding or deleting users and extensions,
 - adding or deleting scheduled reports or alerts
4. After analyzing the old calls and statistics you need to reset the display of the original DB 'BluesPro'
5. Close the Web interface Imagicle Application Suite
6. Reset to its original value 'database = BluesPro' inside de file C:\Program Files (x86)\StonevoiceAS\Apps\BillyBlues\Engine\Web\@ConnectionStrings.config

Procedure to delete calls preceding the last 6 months

This procedure delete the calls from the database of Billy Blue's 4; the deleting occurs in multiple steps in order to limit as much as possible the size of the transaction log and to speed up the operation; with a small database (<100k calls) may make sense also means the elimination of a single delete.

Proceed as follows:

1. Copy the attached files on the desktop 'Delete external calls.sql'
e 'Delete internal calls.sql'
2. Double click on the first file'Delete external calls.sql' ; Microsoft SQL Server Management Studio will automatically start.
3. Connect to the SQL Server
4. Select the Database 'BluesPro' from the drop down
5. Make sure the voice Execution Time-out under Tools / Options -> Query Execution is set to 0 (No time-out)
6. Click to Execute >
7. You will see a message that inform the number of records that the script will eliminate, as in the example below:

Will be removed calls prior to:

Apr 1 2014 12:00AM

Number of calls to be deleted: 0

Number of rejects calls to be eliminated:0

8. Check that the date displayed is the one you want.
All calls prior to that date will be deleted
9. From the window 'Uncomment' the **SECTION RUNNING THE CANCELLATION OF RECORD** deleting the text `/*` and `*/` at the points indicated by the script

The section is preceded by the message:

-- Note: Remove the comments `/*` and `*/` from the code below to delete the records

10. Click to Execute >
11. The script could take several hours to do this; approximately on a Pentium Core 2 Duo 2.33 Ghz are eliminated approximately 100,000 rows every 4 minutes.
12. Once the operation is complete you should run the "Shrink" of the db and files:
 - o Right-click on the Database Blues Pro -> Tasks -> Shrink -> DataBase
 - o Right-click on the Database Blues Pro -> Tasks -> Shrink -> File
13. Double click on the first file'Delete internals calls.sql' ; Microsoft SQL Server Management Studio will automatically start.
14. Repeat the procedure from step 3.