

# Imagicle Hotel. Selta SAEKEY and SAEIPX Configuration Guide

2016





## Contents

<b>1</b>	<b>SELTA SUPPORTED PBX SYSTEMS. ....</b>	<b>5</b>
<b>2</b>	<b>HOW TO CONFIGURE THE PBX SYSTEM FOR THE INTEGRATION WITH BLUE'S HOTEL PRO. ....</b>	<b>6</b>
<b>3</b>	<b>PBX CONNECTION CONFIGURATION.....</b>	<b>7</b>
<b>4</b>	<b>BLUE'S HOTEL PRO CONFIGURATION.....</b>	<b>9</b>
<b>5</b>	<b>WHAT TO DO IF.....</b>	<b>12</b>
5.1.1	The recorder does not connect to the PBX .....	12
5.1.2	Blue's Hotel Pro does not log calls in real time .....	12
5.1.3	Blue's Hotel Pro does not run basic functions .....	12
<b>6</b>	<b>TECHNICAL SUPPORT – AFTER SALE SERVICE.....</b>	<b>13</b>



## Imagicle Hotel.

The software you have always been longing for to manage your hotel!

Blue's Hotel Pro is the ideal solution for small and medium Hotels.

Integrated with the telephone system, equipped with call billing, the easiest application on the market to manage hotel services from the PC (no codes from the operator telephone required).

Blue's Hotel manages reservations, shows the room state, handles single or group check-ins and check-outs, sets up and verifies wake-up calls, charges extra services, prints a complete and easy to read bill in a mouse click.

Blue's Hotel Pro is scalable and is available in different versions, according to the number of extension installed in your premises: from 12 to 500 extensions. For more than 500 extensions, it is recommended to perform a telephone cost analysis: Blue's Professional Advance includes Blue's Hotel Pro, for both call cost statistics and hotel services.

## 1 Selta supported PBX systems.

Blue's Hotel Pro manages hotel services directly from your PC for these Selta PBX systems:

- SAEKEY
- SAEIPX

The connection required for running Hotel services are:

- Serial

both for Hotel commands and call billing.

## 2 How to configure the PBX system for the integration with Blue's Hotel Pro.

- 1) Using the PBX programming software, set the PBX to 'HOST' mode
- 2) Using the PBX programming software, set the print mode to 'CONTINUOUS'

---

### **IMPORTANT**

In case the supported SELTA PBX does not have the 'CONTINUOUS' print mode, in order to enable such mode, please, load the proper SELTA firmware on the machine.

---

### 3 PBX connection Configuration.

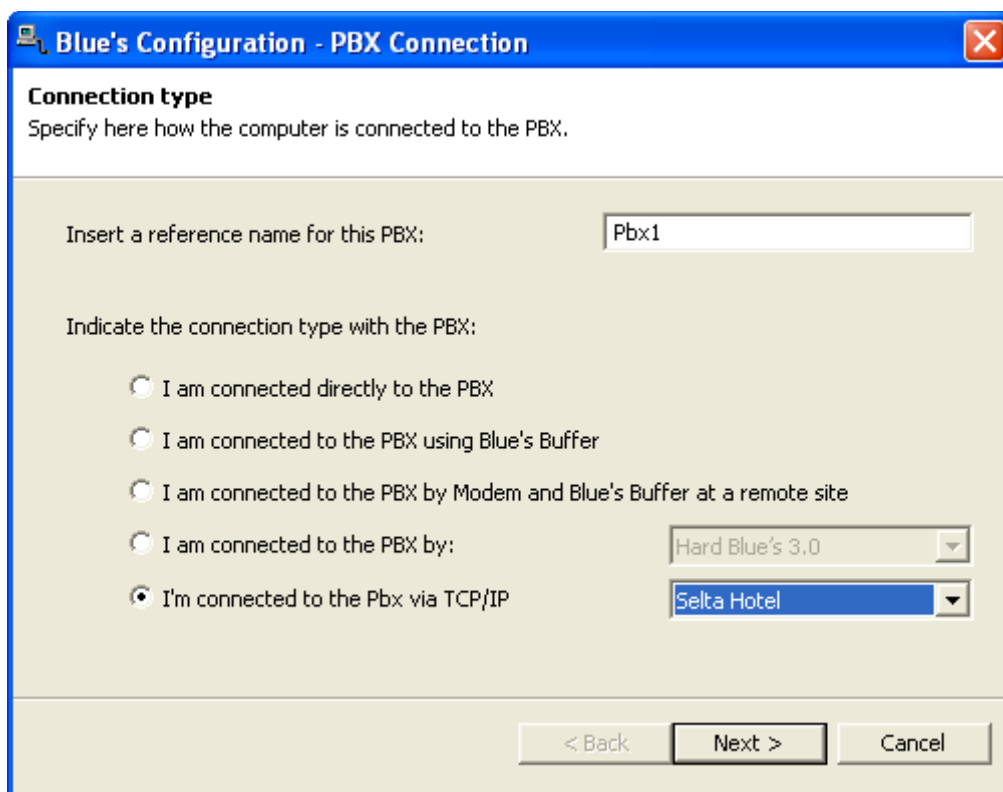
- 1) Start Blue's Hotel Pro Configuration from Blue's start menu program group, if it does not start automatically.
- 2) In the required field, enter a name for the PBX connection (i.e. PBX 1 as shown in the picture), select 'I'm connected to the PBX via TCP/IP', select 'Selta Hotel' from the list in the drop down box and click 'Next >'.

---

**IMPORTANT**

Use this configuration both if the PBX is connected to the PC via serial port or USB.

---



- 3) The next page shows the serial connection parameters. These are default values, it is therefore necessary to select the com port of the Pc to which the PBX is connected and enter the password (PAROLA5 by default)

---

**IMPORTANT**

The default password is PAROLA5 (all upper case)

---

**Blue's configuration - Pbx connection**

**Communication parameters**  
Type in the communication settings for the selected device.

Communication port: COM1

Connection speed: 19200

Data bits: 8

Parity: None

Stop bits: 2

Handshake: None

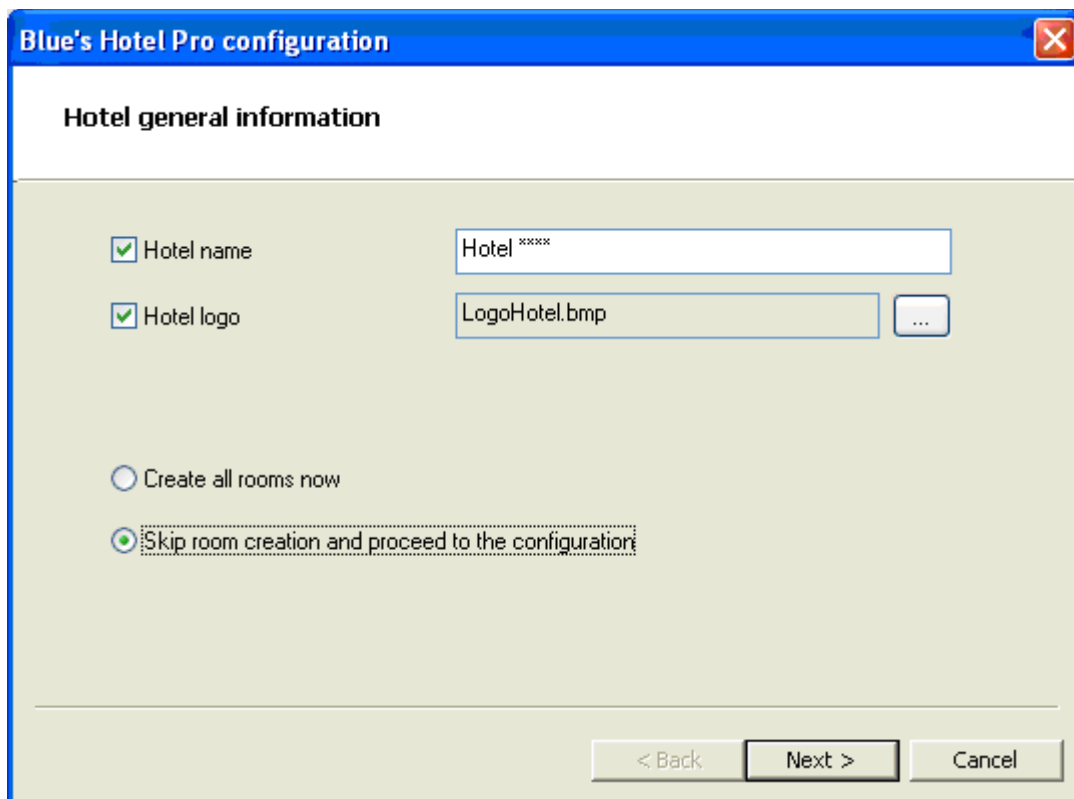
PBX password: \*\*\*\*\*

< Back   Next >   Cancel

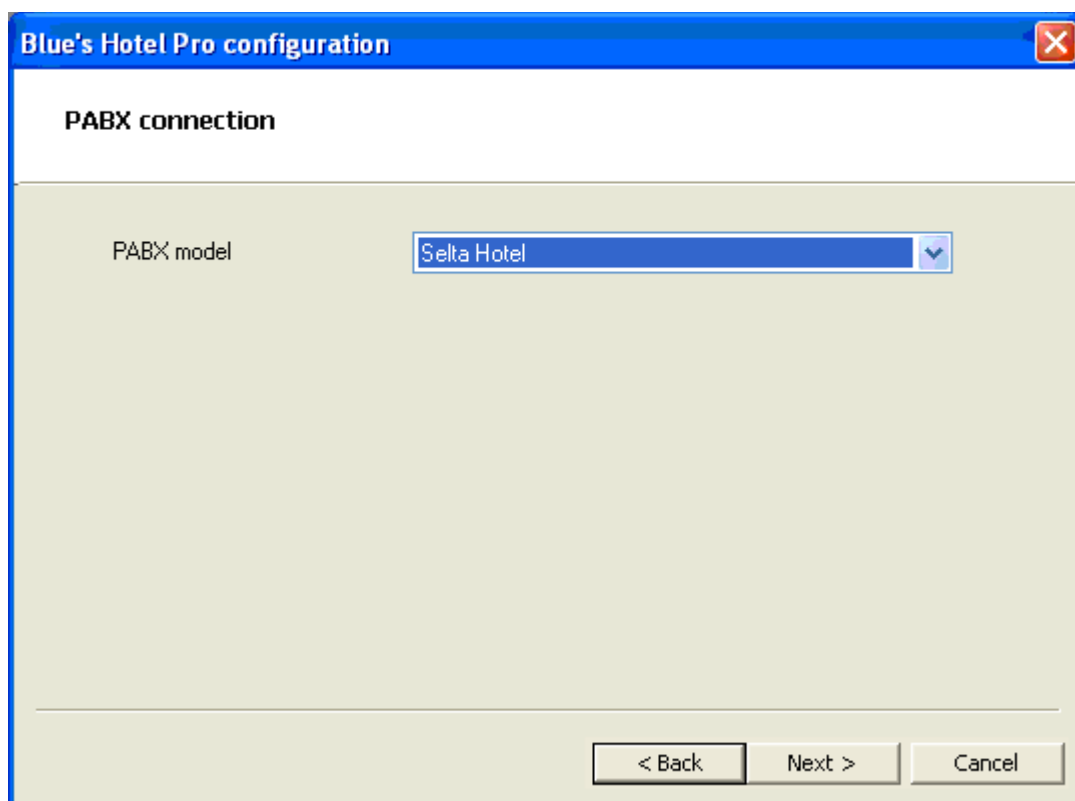


## 4 Blue's Hotel Pro Configuration.

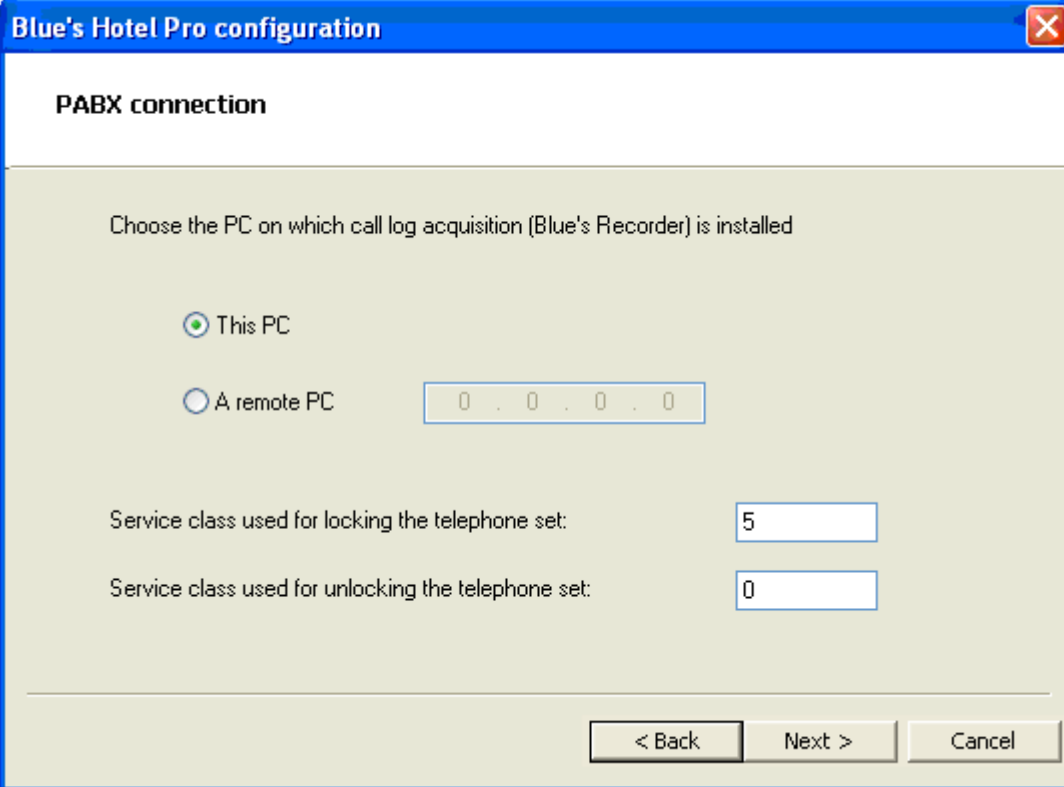
- 1) Start Blue's Hotel Pro
- 2) If the configuration does not start automatically, start it manually from the 'File' menu, choosing 'Configuration...'
- 3) As the picture hereunder shows, select the Hotel and logo and name (options), select 'Skip room creation and proceed to the configuration' and click 'Next >'



- 4) In the next window, click 'Selta Hotel' and click 'Next >'



- 5) Select the PC that runs call log acquisition (Blue's Recorder)



The screenshot shows a configuration window titled "Blue's Hotel Pro configuration" with a close button in the top right corner. The main heading is "PABX connection". Below this, the instruction reads: "Choose the PC on which call log acquisition (Blue's Recorder) is installed". There are two radio button options: "This PC" (which is selected) and "A remote PC". Next to "A remote PC" is a text input field containing "0 . 0 . 0 . 0". Below these options are two more input fields: "Service class used for locking the telephone set:" with the value "5", and "Service class used for unlocking the telephone set:" with the value "0". At the bottom right, there are three buttons: "< Back", "Next >", and "Cancel".

- 6) Set the service classes that will be set for blocking and unblocking the extensions

- 7) Click 'Finish' to end the configuration

Proceed now with the configuration and use of Blues Hotel Pro.

## 5 What to do if...

### 5.1.1 The recorder does not connect to the PBX

- Make sure the PBX serial connection information have been entered correctly
- Make sure the PBX is switched on
- Start a Hyper Terminal session with the same settings used on Recorder and make sure a row of numbers is received every time a phone call is made.

### 5.1.2 Blue's Hotel Pro does not log calls in real time

- Make sure the PBX is set to 'Continuous Print'

### 5.1.3 Blue's Hotel Pro does not run basic functions

- Make sure the PBX is configured in HOST mode and the print option is set to continuous

## 6 Technical support – after sale service.

Feel free to contact us Monday to Friday from 8.30am to 12.30pm and from 2pm to 6pm (UK time: 7.30am-11.30am and 1pm-5pm)

- web <http://www.telcen.it/eng/contatti.asp>
- e-mail [support@telcen.it](mailto:support@telcen.it)
- phone +39.0584.943232
- fax +39.0584.943325

