

How to know how many Attendant Console (BAE-BAP-BOE) clients are connected realtime on the server

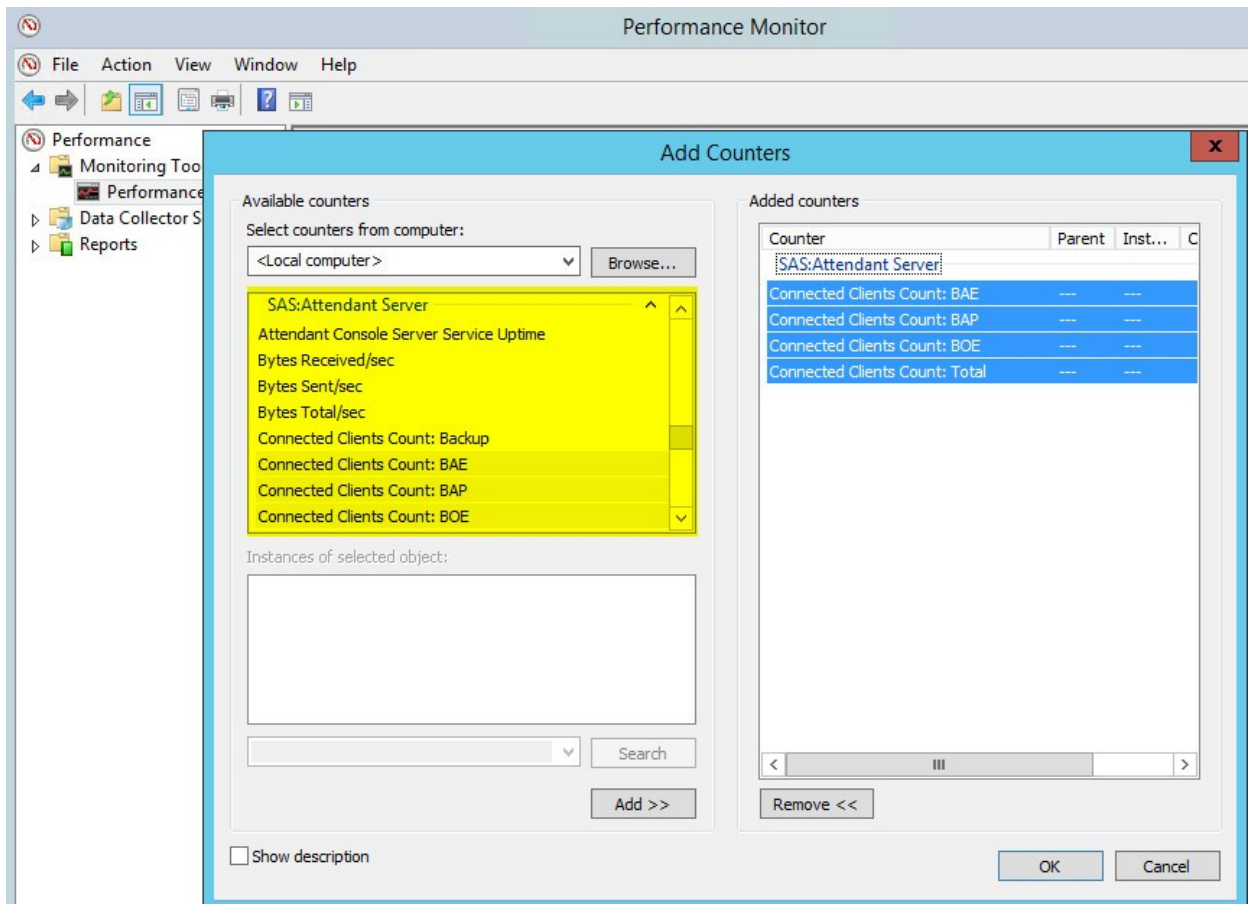
Applies from Application Suite 2013.7.1

Description:

How to know how many Attendant Console (BAE-BAP-BOE) clients are connected realtime on the server

How-to:

1. Open "Performance Monitor" on the Imagicle Application Suite server (perfmon.msc) and follow these steps:



2. Click on Performance Monitor
3. Click Add (Ctrl+N)
4. Select the counter: "IAS: Attendant Server"
5. Select the desired counter "Connected Clients Count" among: Total / BAE / BAP / BOE
6. Click to "Add >>"
7. Click ok and see the Attendant Console clients connected real-time on that server